



CUSTOMER:

Customer Name: ALINVEST

PROJECT:

Project Code: E2558

Project Name: ALFAGEN

DOCUMENT INFORMATION:



Document Title: Equipment Spider Diagram

Contractor File Name: 2558-3312-TMT-E-DWG-SPD

Contractor Revision Number: A

Customer File Name: -








Customer Revision Number: -

| | | | | | | | | | | | | | | |
|----------|-------------------|------------------------|----------|-------------|-------------|------------|---|---|------------------|---|--------------------------------|-------------------------|-------------------------|---|
| | | | | | | CONTRACTOR |  | CONTRACTOR dwg number 2558-3312-TMT-E-DWG-SPD | Rev. A | Project Code E2558 | Project Name ALFAGEN | | |  |
| | | | | | | | | | | Document Title Equipment Spider Diagram | | | Scale 1:1 | |
| A | 29/11/2025 | INITIAL VERSION | | RORI | RORI | | | | | RORI | CLIENT dwg number - | Rev. - | DESIGNED: RORI | |
| Rev. | Date | Revisions description | | Designed | Draw | Approved | | | | DATE: 29/11/2025 | | DATE: 29/11/2025 | DATE: 29/11/2025 | Sheet 1 OF x |
| 1 | | 2 | 3 | 4 | | 5 | | | | 6 | 7 | 8 | 9 | 10 |

POWER AND CONTROL PANEL


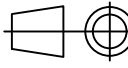
r41.41-3312-TMT-GEN01-PCP01

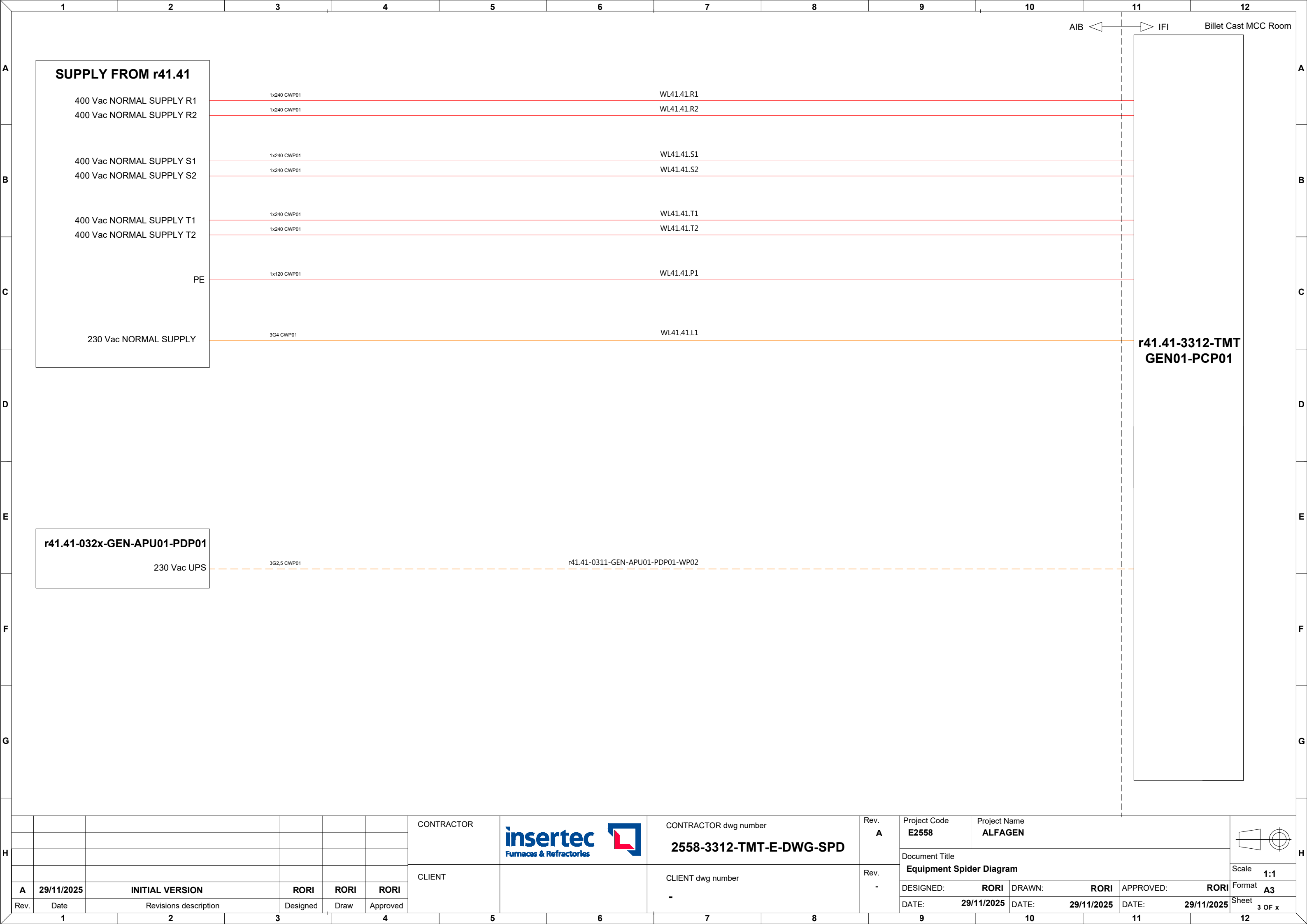
LEGEND

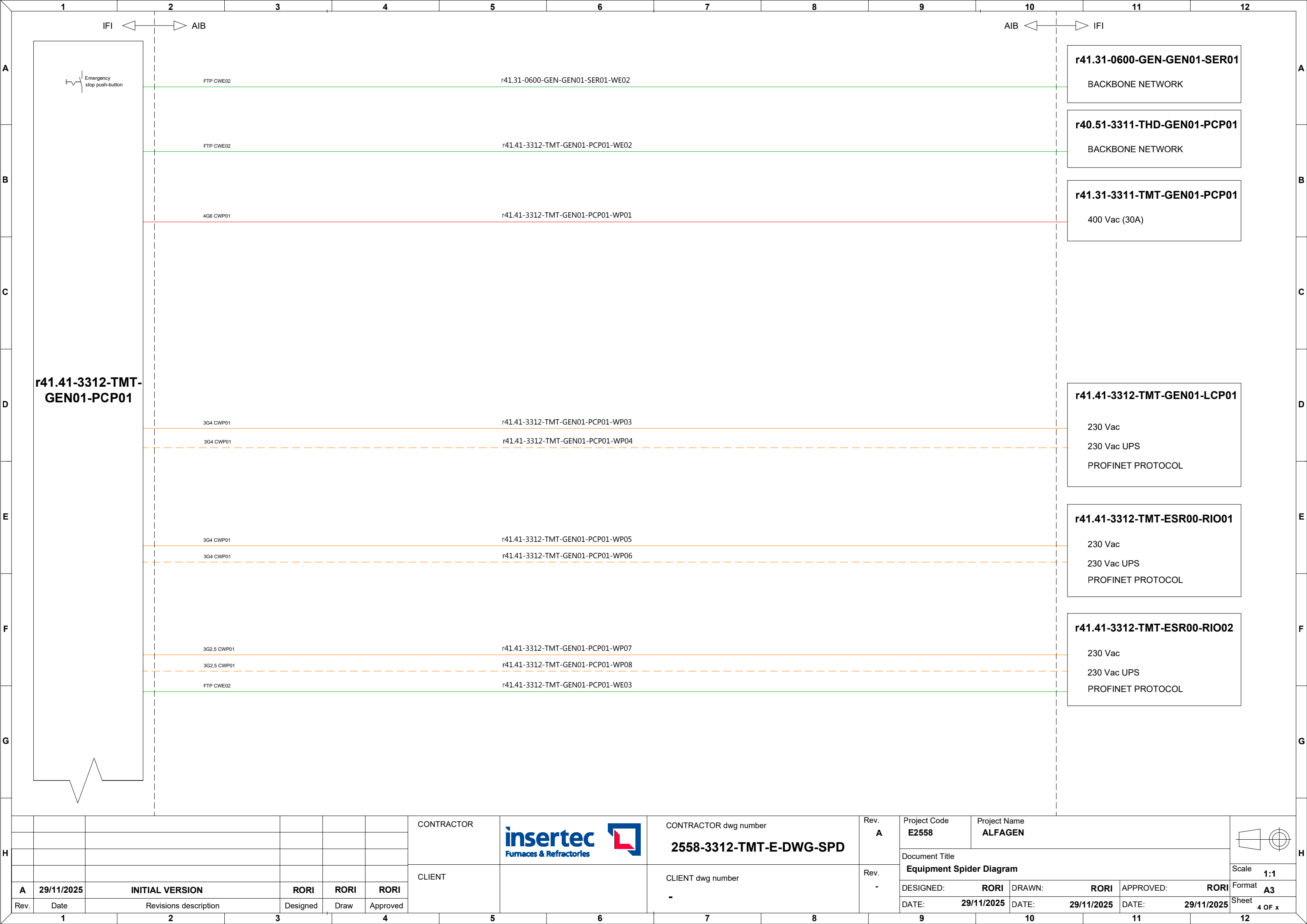
| | | | |
|---|-------------------------|---|---------------------------|
|  | 400Vac Power supply |  | Regular control signals |
|  | 400Vac UPS power supply |  | Analog & shielded signals |
|  | 230Vac Power supply |  | T/C connection |
|  | 230Vac UPS power supply |  | Communication connection |

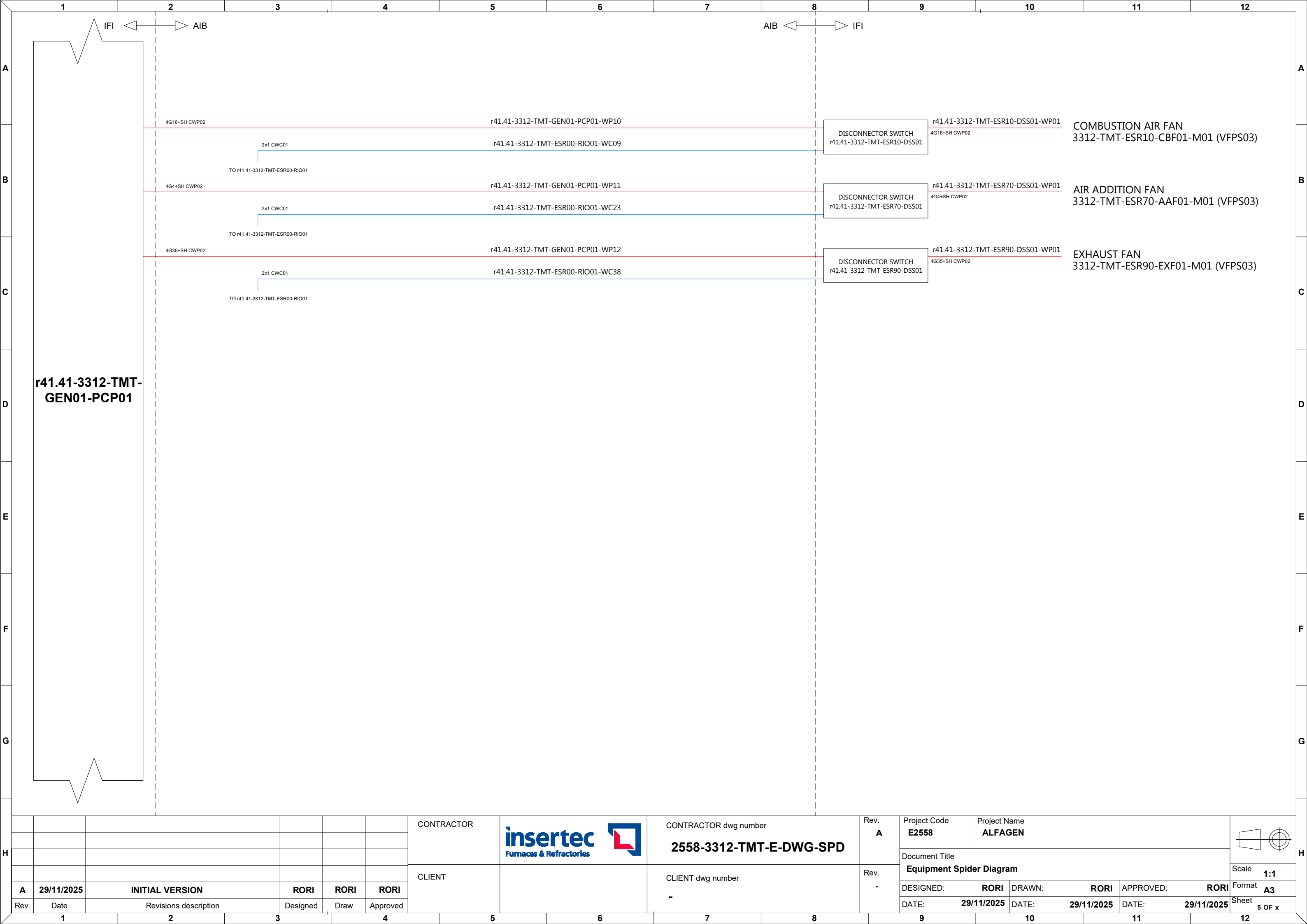
CATEGORY


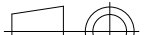
| |
|---|
| Power cables |
| CWP01: Regular power cables |
| CWP02: Shielded power cable |
| CWP03: Flexible power cables |
| CWP04: Regular high temperature power cables |
| CWP05: Shielded high temperature power cables |
| CWP06: General use power cable |
| Instrumentation and control cables |
| CWC01: Regular instrumentation control cables |
| CWC02: Shielded instrumentation control cables |
| CWC03: Thermocouple cable |
| CWC04: Flexible instrumentation control cables |
| CWC05: High voltage cables for ignition transformers |
| CWC06: Regular high temperature instrumentation control cables |
| CWC07: Shielded high temperature instrumentation control cables |
| Communication cables |
| CWE01: Fieldbus communication cable (Inside cabinets) |
| CWE02: Fieldbus communication cable (Outside cabinets) |
| CWE03: Optic fibre communication cable |

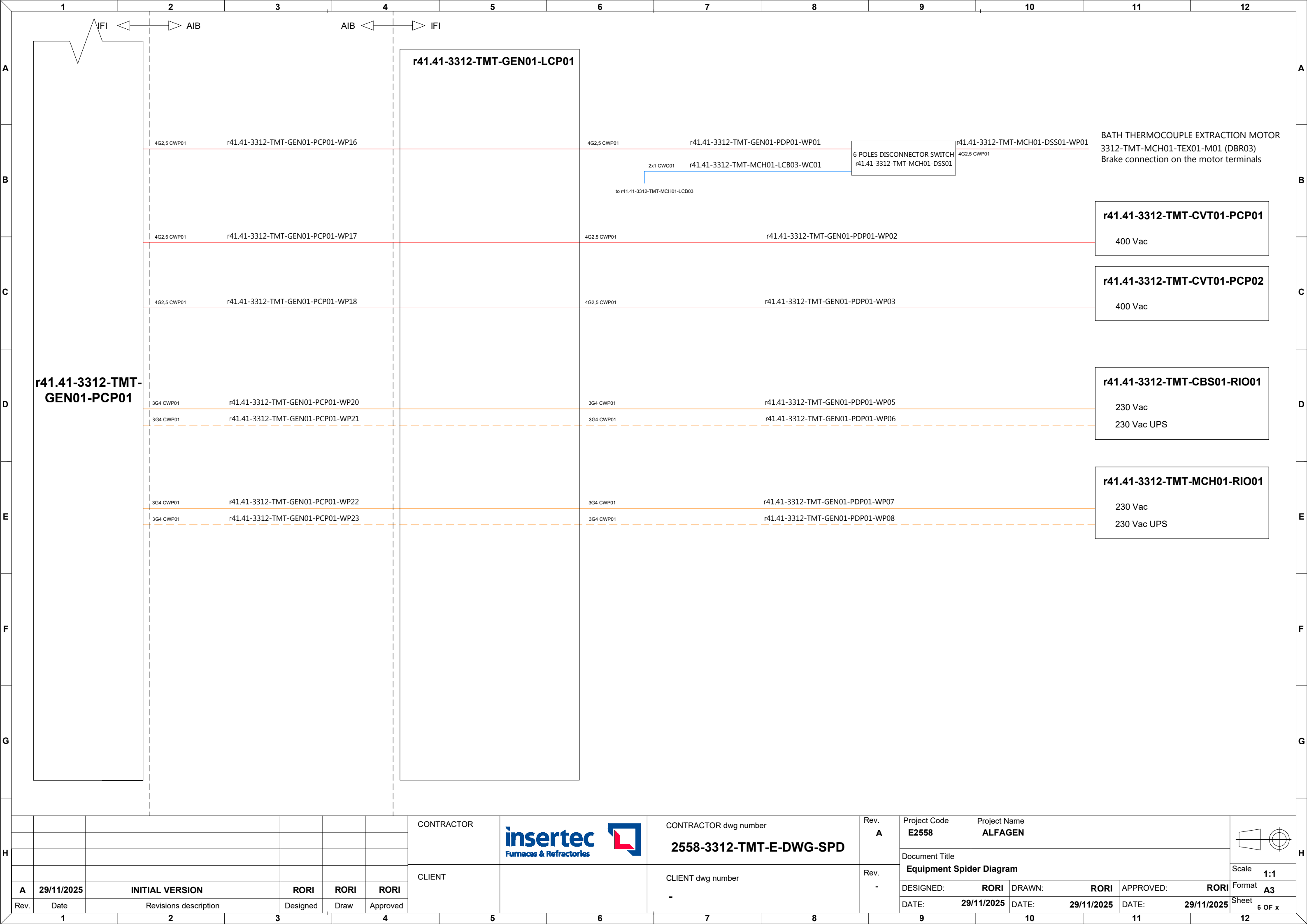
| | | | | | | | | | | | | | | |
|----------|-------------------|------------------------|---|-------------|-------------|------------|---|---|------------------|---|--------------------------------|-------------------------|------------------------|---|
| | | | | | | CONTRACTOR |  | CONTRACTOR dwg number 2558-3312-TMT-E-DWG-SPD | Rev. A | Project Code E2558 | Project Name ALFAGEN | | |  |
| | | | | | | | | | | Document Title Equipment Spider Diagram | | | Scale 1:1 | |
| A | 29/11/2025 | INITIAL VERSION | | RORI | RORI | | | | | DESIGNED: RORI | DRAWN: RORI | APPROVED: RORI | Format A3 | |
| Rev. | Date | Revisions description | | Designed | Draw | Approved | | CLIENT dwg number - | Rev. - | DATE: 29/11/2025 | DATE: 29/11/2025 | DATE: 29/11/2025 | Sheet 2 OF x | |
| 1 | | 2 | 3 | 4 | | 5 | | | | 9 | 10 | 11 | 12 | |
| | | | | | | | | | | | | | | |


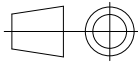






| | | | | | | | | | | | | | | | | | | | | | | | |
|---|----------|-------------------|------------------------|---|-------------|--------|------------|---|---|-----------------------|------------------------------|---|---|---|-------------------------|------------------------|--|----|--|----|--|----|--|
| H | | | | | | | CONTRACTOR |  | CONTRACTOR dwg number 2558-3312-TMT-E-DWG-SPD | Rev. A | Project Code E2558 | Project Name ALFAGEN |  | H | | | | | | | | | |
| | | | | | | | | | | | | Document Title Equipment Spider Diagram | | | Scale 1:1 | | | | | | | | |
| | | | | | | CLIENT | | CLIENT dwg number - | Rev. - | DESIGNED: RORI | DRAWN: RORI | APPROVED: RORI | Format A3 | | | | | | | | | | |
| | A | 29/11/2025 | INITIAL VERSION | | RORI | | | | | RORI | RORI | DATE: 29/11/2025 | DATE: 29/11/2025 | | DATE: 29/11/2025 | Sheet 5 OF x | | | | | | | |
| | Rev. | Date | Revisions description | | Designed | | | | | Draw | Approved | | | | | | | | | | | | |
| 1 | | 2 | | 3 | | 4 | | 5 | | 6 | | 7 | | 8 | | 9 | | 10 | | 11 | | 12 | |











| | | | | | | | | | | | | | | |
|----------|-------------------|------------------------|---|-------------|-------------|------------|---|---|------------------|---|--------------------------------|-------------------------|------------------------|---|
| | | | | | | CONTRACTOR |  | CONTRACTOR dwg number 2558-3312-TMT-E-DWG-SPD | Rev. A | Project Code E2558 | Project Name ALFAGEN | | |  |
| | | | | | | | | | | Document Title Equipment Spider Diagram | | | Scale 1:1 | |
| A | 29/11/2025 | INITIAL VERSION | | RORI | RORI | | | | | DESIGNED: RORI | DRAWN: RORI | APPROVED: RORI | Format A3 | |
| Rev. | Date | Revisions description | | Designed | Draw | Approved | | CLIENT dwg number - | Rev. - | DATE: 29/11/2025 | DATE: 29/11/2025 | DATE: 29/11/2025 | Sheet 6 OF x | |
| 1 | 2 | 3 | 4 | 5 | 6 | 7 | 8 | 9 | 10 | 11 | 12 | | | |

LOCAL CONTROL PANEL


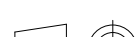
r41.41-3312-TMT-GEN01-LCP01

LEGEND

| | | | |
|---|-------------------------|---|---------------------------|
|  | 400Vac Power supply |  | Regular control signals |
|  | 400Vac UPS power supply |  | Analog & shielded signals |
|  | 230Vac Power supply |  | T/C connection |
|  | 230Vac UPS power supply |  | Communication connection |

CATEGORY

| |
|---|
| Power cables |
| CWP01: Regular power cables |
| CWP02: Shielded power cable |
| CWP03: Flexible power cables |
| CWP04: Regular high temperature power cables |
| CWP05: Shielded high temperature power cables |
| CWP06: General use power cable |
| Instrumentation and control cables |
| CWC01: Regular instrumentation control cables |
| CWC02: Shielded instrumentation control cables |
| CWC03: Thermocouple cable |
| CWC04: Flexible instrumentation control cables |
| CWC05: High voltage cables for ignition transformers |
| CWC06: Regular high temperature instrumentation control cables |
| CWC07: Shielded high temperature instrumentation control cables |
| Communication cables |
| CWE01: Fieldbus communication cable (Inside cabinets) |
| CWE02: Fieldbus communication cable (Outside cabinets) |
| CWE03: Optic fibre communication cable |

| | | | | | | | | | | | | | | | | | | |
|------|------------|-----------------------|--|--|----------|------------|---|-------------------------|-----------|--------------------------|-------------------------|------------------|--|---|--|------------------|--|-----------------|
| | | | | | | CONTRACTOR |  | CONTRACTOR dwg number | Rev. A | Project Code E2558 | Project Name ALFAGEN | | |  | | | | |
| | | | | | | | | 2558-3312-TMT-E-DWG-SPD | | Document Title | | | | | | | | |
| | | | | | | | | | | Equipment Spider Diagram | | | | | | Scale 1:1 | | |
| A | 29/11/2025 | INITIAL VERSION | | | RORI | RORI | RORI | CLIENT | | CLIENT dwg number | Rev. - | DESIGNED: RORI | | DRAWN: RORI | | APPROVED: RORI | | Format A3 |
| Rev. | Date | Revisions description | | | Designed | Draw | Approved | | | - | | DATE: 29/11/2025 | | DATE: 29/11/2025 | | DATE: 29/11/2025 | | Sheet 7 OF x |
| | | | | | | | | | | | | | | | | | | |

ENERGY SOURCE REMOTE IO


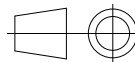
r41.41-3312-TMT-ESR00-RIO01

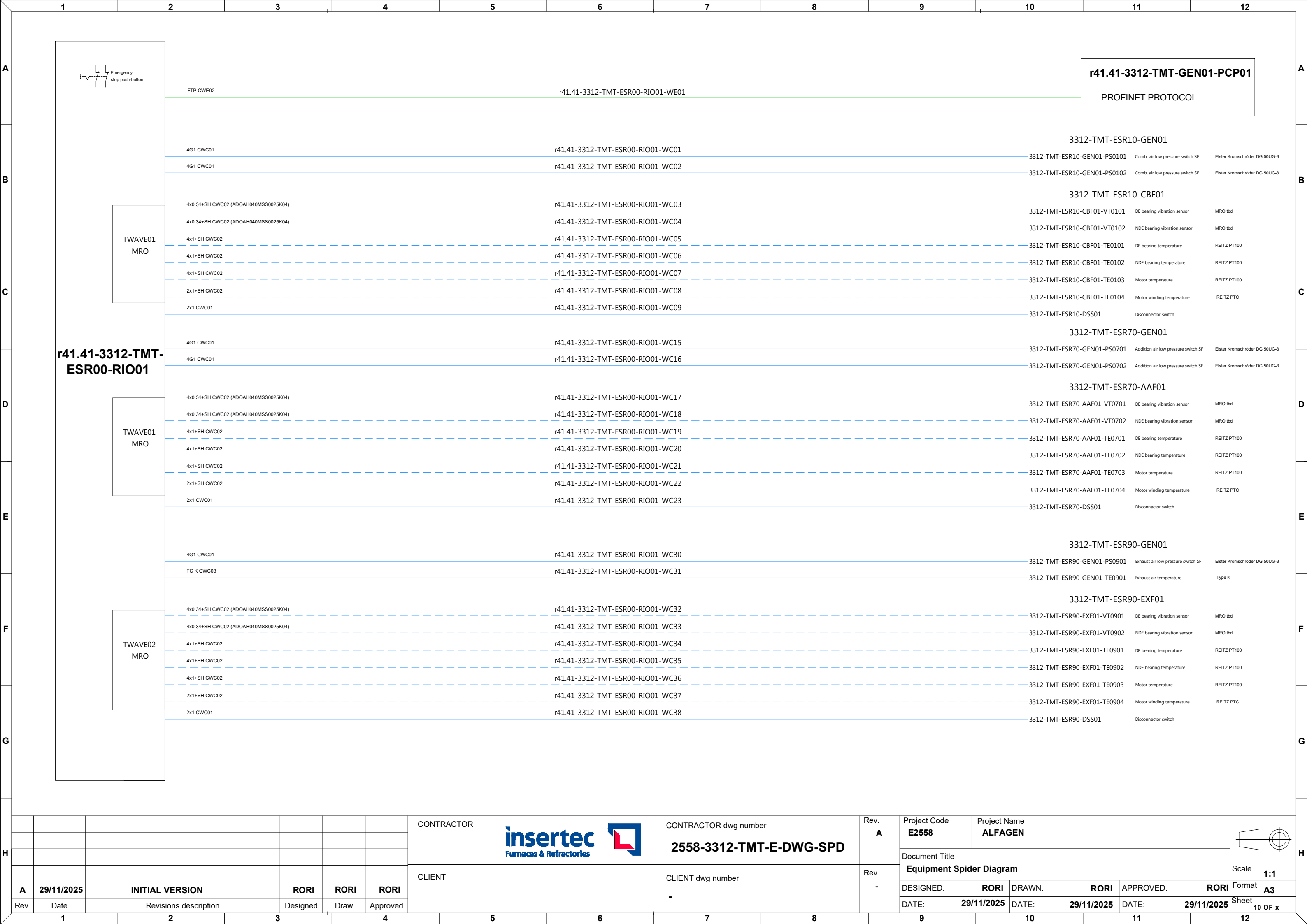
LEGEND

- 400Vac Power supply
- 400Vac UPS power supply
- 230Vac Power supply
- 230Vac UPS power supply
- Regular control signals
- Analog & shielded signals
- T/C connection
- Communication connection

CATEGORY

- Power cables
- CWP01: Regular power cables
- CWP02: Shielded power cable
- CWP03: Flexible power cables
- CWP04: Regular high temperature power cables
- CWP05: Shielded high temperature power cables
- CWP06: General use power cable
- Instrumentation and control cables
- CWC01: Regular instrumentation control cables
- CWC02: Shielded instrumentation control cables
- CWC03: Thermocouple cable
- CWC04: Flexible instrumentation control cables
- CWC05: High voltage cables for ignition transformers
- CWC06: Regular high temperature instrumentation control cables
- CWC07: Shielded high temperature instrumentation control cables
- Communication cables
- CWE01: Fieldbus communication cable (Inside cabinets)
- CWE02: Fieldbus communication cable (Outside cabinets)
- CWE03: Optic fibre communication cable

| | | | | | | | | | | | | | | | | | |
|----------|-------------------|------------------------|--|-------------|-------------|-------------|---|---|-------------------------------|---|--------------------------------|-------------------------|-------------------------|---|------------------------|---------------------|--|
| | | | | | | CONTRACTOR |  | CONTRACTOR dwg number 2558-3312-TMT-E-DWG-SPD | Rev. A | Project Code E2558 | Project Name ALFAGEN | | |  | | | |
| | | | | | | | | | | Document Title Equipment Spider Diagram | | | | | | Scale 1:1 | |
| | | | | | | | | | | | | | | | | | |
| A | 29/11/2025 | INITIAL VERSION | | RORI | RORI | RORI | CLIENT | | CLIENT dwg number - | Rev. - | DESIGNED: RORI | DRAWN: RORI | APPROVED: RORI | | Format A3 | | |
| Rev. | Date | Revisions description | | Designed | Draw | Approved | | | | | DATE: 29/11/2025 | DATE: 29/11/2025 | DATE: 29/11/2025 | | Sheet 9 OF x | | |
| | | | | | | | | | | | | | | | | | |



ENERGY SOURCE REMOTE IO



r41.41-3312-TMT-ESR00-RIO02

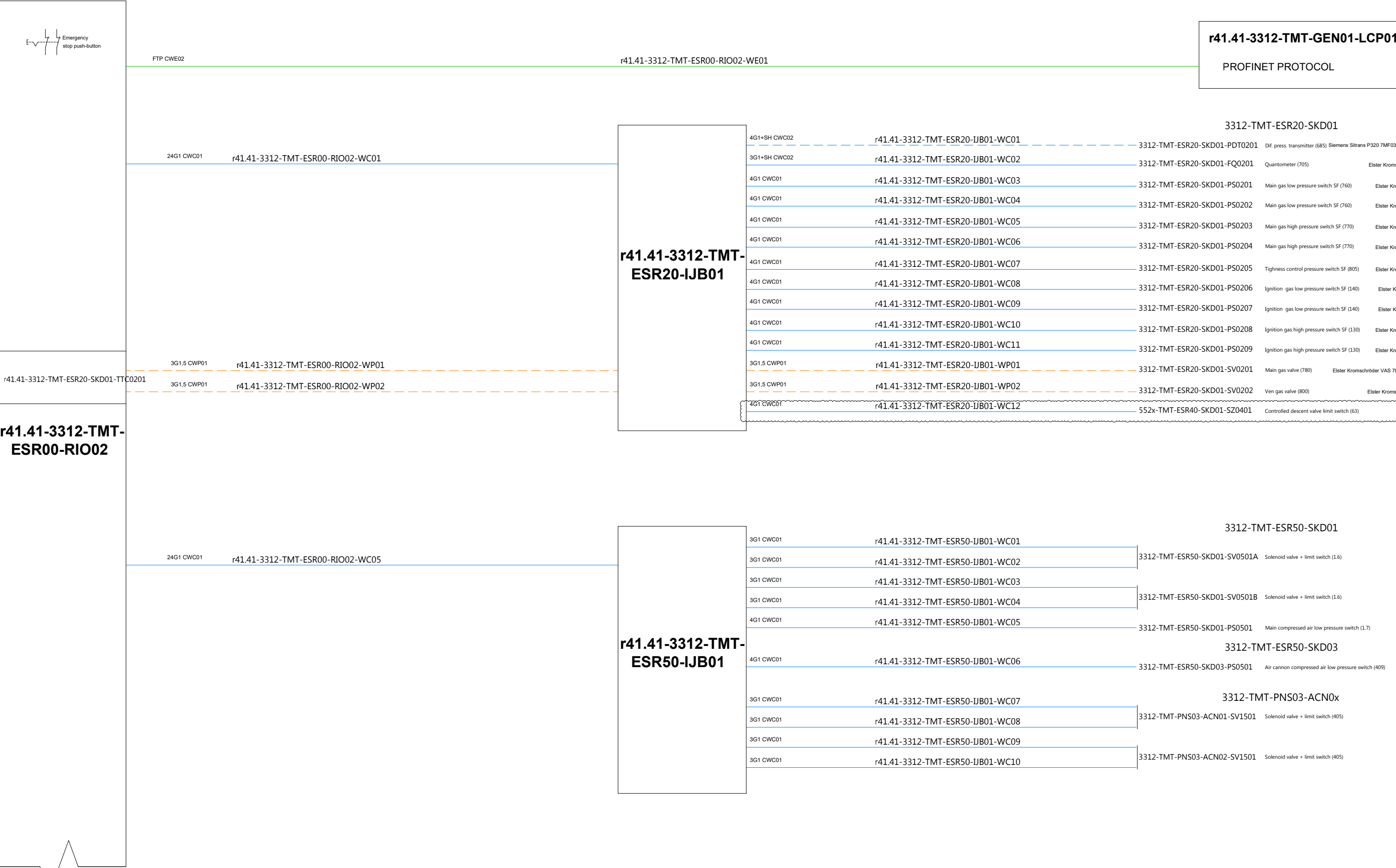
LEGEND



- 400Vac Power supply
- 400Vac UPS power supply
- 230Vac Power supply
- 230Vac UPS power supply
- Regular control signals
- Analog & shielded signals
- T/C connection
- Communication connection

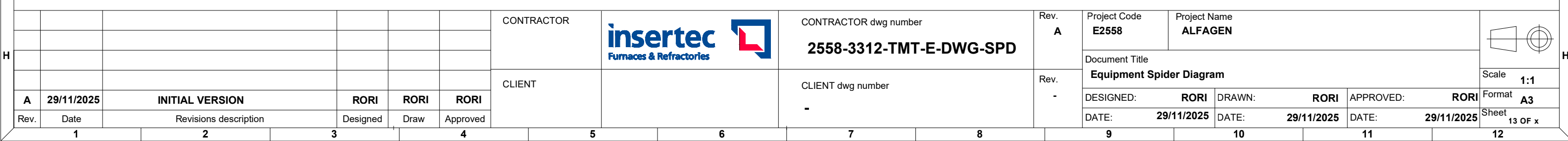
CATEGORY

- Power cables
- CWP01: Regular power cables
- CWP02: Shielded power cable
- CWP03: Flexible power cables
- CWP04: Regular high temperature power cables
- CWP05: Shielded high temperature power cables
- CWP06: General use power cable
- Instrumentation and control cables
- CWC01: Regular instrumentation control cables
- CWC02: Shielded instrumentation control cables
- CWC03: Thermocouple cable
- CWC04: Flexible instrumentation control cables
- CWC05: High voltage cables for ignition transformers
- CWC06: Regular high temperature instrumentation control cables
- CWC07: Shielded high temperature instrumentation control cables
- Communication cables
- CWE01: Fieldbus communication cable (Inside cabinets)
- CWE02: Fieldbus communication cable (Outside cabinets)
- CWE03: Optic fibre communication cable

| | | | | | | | | | | | | | | | |
|----------|-------------------|------------------------|--|--|-------------|-------------|---|---|------------------|---|--------------------------------|-----------------------|-------------------------|---|-------------------------|
| | | | | | | CONTRACTOR |  | CONTRACTOR dwg number 2558-3312-TMT-E-DWG-SPD | Rev. A | Project Code E2558 | Project Name ALFAGEN | | |  | |
| | | | | | | | | | | Document Title Equipment Spider Diagram | | | Scale 1:1 | | |
| | | | | | | | | | | DESIGNED: RORI | DRAWN: RORI | APPROVED: RORI | | | Format A3 |
| A | 29/11/2025 | INITIAL VERSION | | | RORI | RORI | RORI | CLIENT dwg number - | Rev. - | DATE: 29/11/2025 | | | DATE: 29/11/2025 | DATE: 29/11/2025 | Sheet 11 OF x |
| Rev. | Date | Revisions description | | | Designed | Draw | Approved | | | DATE: 29/11/2025 | | | DATE: 29/11/2025 | DATE: 29/11/2025 | |
| 1 | 2 | 3 | | | 4 | 5 | 6 | | | 7 | 8 | 9 | 10 | 11 | |



| | | | | | | | | | | | | | | | | | |
|------|------------|-----------------------|--|----------|------|------------|---|-------------------------|-------------------|--------------------------|-------------------------|--|------------------|---|------------------|------------------|------------------|
| | | | | | | CONTRACTOR |  | CONTRACTOR dwg number | Rev. A | Project Code E2558 | Project Name ALFAGEN | | |  | | | |
| | | | | | | | | 2558-3312-TMT-E-DWG-SPD | | Document Title | | | | | | | |
| | | | | | | | | | | Equipment Spider Diagram | | | | | | Scale 1:1 | |
| A | 29/11/2025 | INITIAL VERSION | | RORI | RORI | RORI | CLIENT | | CLIENT dwg number | Rev. - | DESIGNED: RORI | | DRAWN: RORI | APPROVED: RORI | Format A3 | | |
| Rev. | Date | Revisions description | | Designed | Draw | Approved | | | - | | | | DATE: 29/11/2025 | | DATE: 29/11/2025 | DATE: 29/11/2025 | Sheet 12 OF x |
| | | | | | | | | | | | | | | | | | |



COMBUSTION SYSTEM REMOTE IO


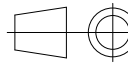
r41.41-3312-TMT-CBS01-RIO01

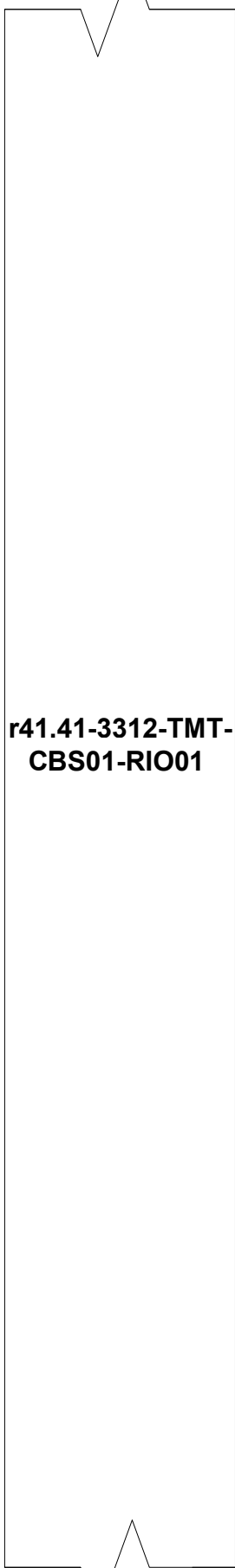
LEGEND


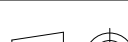
- 400Vac Power supply
- 400Vac UPS power supply
- 230Vac Power supply
- 230Vac UPS power supply
- Regular control signals
- Analog & shielded signals
- T/C connection
- Communication connection

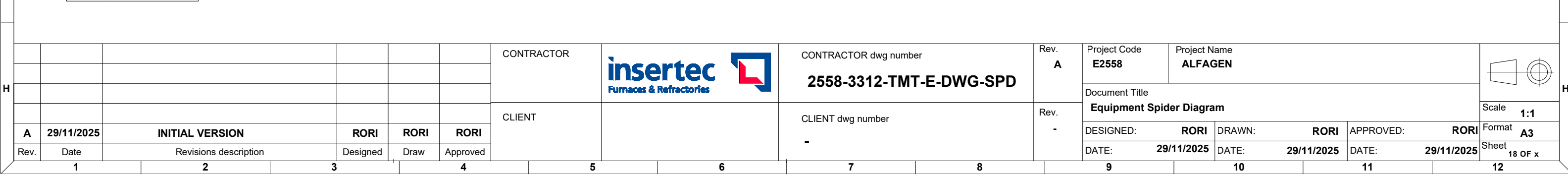
CATEGORY

- Power cables
- CWP01: Regular power cables
- CWP02: Shielded power cable
- CWP03: Flexible power cables
- CWP04: Regular high temperature power cables
- CWP05: Shielded high temperature power cables
- CWP06: General use power cable
- Instrumentation and control cables
- CWC01: Regular instrumentation control cables
- CWC02: Shielded instrumentation control cables
- CWC03: Thermocouple cable
- CWC04: Flexible instrumentation control cables
- CWC05: High voltage cables for ignition transformers
- CWC06: Regular high temperature instrumentation control cables
- CWC07: Shielded high temperature instrumentation control cables
- Communication cables
- CWE01: Fieldbus communication cable (Inside cabinets)
- CWE02: Fieldbus communication cable (Outside cabinets)
- CWE03: Optic fibre communication cable

| | | | | | | | | | | | | | | | | |
|----------|-------------------|------------------------|--|-------------|-------------|-------------|---|---|-------------------------------|---|--------------------------------|-------------------------|-------------------------|---|-------------------------|--|
| | | | | | | CONTRACTOR |  | CONTRACTOR dwg number 2558-3312-TMT-E-DWG-SPD | Rev. A | Project Code E2558 | Project Name ALFAGEN | | |  | | |
| | | | | | | | | | | Document Title Equipment Spider Diagram | | | | | | |
| | | | | | | | | | | | | | | | | |
| A | 29/11/2025 | INITIAL VERSION | | RORI | RORI | RORI | CLIENT | | CLIENT dwg number - | Rev. - | DESIGNED: RORI | DRAWN: RORI | APPROVED: RORI | | Scale 1:1 | |
| Rev. | Date | Revisions description | | Designed | Draw | Approved | | | | | Format A3 | | | | | |
| | | | | | | | | | | | DATE: 29/11/2025 | DATE: 29/11/2025 | DATE: 29/11/2025 | | Sheet 15 OF x | |



| | | | | | | | | | | | | | | | | | | |
|---|----------|-------------------|------------------------|-------------|-------------|-------------|------------|---|---|------------------|---|--------------------------------|-----------------------|-------------------------|---|---|-------------------------|--|
| H | | | | | | | CONTRACTOR |  | CONTRACTOR dwg number 2558-3312-TMT-E-DWG-SPD | Rev. A | Project Code E2558 | Project Name ALFAGEN | | |  | H | | |
| | | | | | | | | | | | Document Title Equipment Spider Diagram | | | Scale 1:1 | | | | |
| | | | | | | | | | | | DESIGNED: RORI | DRAWN: RORI | APPROVED: RORI | Format A3 | | | | |
| | A | 29/11/2025 | INITIAL VERSION | RORI | RORI | RORI | CLIENT | | CLIENT dwg number - | Rev. - | DATE: 29/11/2025 | | | DATE: 29/11/2025 | DATE: 29/11/2025 | | Sheet 17 OF x | |
| | Rev. | Date | Revisions description | | | Designed | | | | | Draw | Approved | | | | | | |
| | | | | | | | | | | | | | | | | | | |
| | 1 | 2 | 3 | 4 | 5 | 6 | 7 | 8 | 9 | 10 | 11 | 12 | | | | | | |



MELTING CHAMBER REMOTE IO


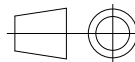
r41.41-3312-TMT-MCH01-RIO01

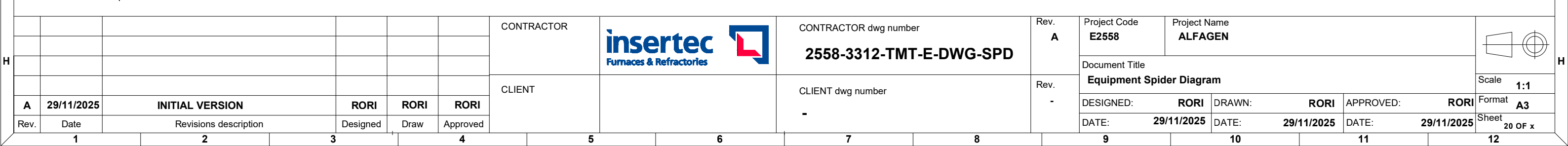
LEGEND

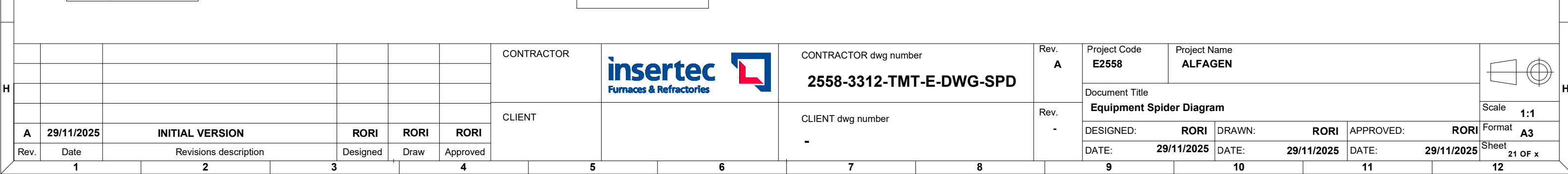
| | | | |
|---|-------------------------|---|---------------------------|
| | 400Vac Power supply | | Regular control signals |
| | 400Vac UPS power supply | | Analog & shielded signals |
| | 230Vac Power supply | | T/C connection |
| | 230Vac UPS power supply | | Communication connection |

CATEGORY

| |
|---|
| Power cables |
| CWP01: Regular power cables |
| CWP02: Shielded power cable |
| CWP03: Flexible power cables |
| CWP04: Regular high temperature power cables |
| CWP05: Shielded high temperature power cables |
| CWP06: General use power cable |
| Instrumentation and control cables |
| CWC01: Regular instrumentation control cables |
| CWC02: Shielded instrumentation control cables |
| CWC03: Thermocouple cable |
| CWC04: Flexible instrumentation control cables |
| CWC05: High voltage cables for ignition transformers |
| CWC06: Regular high temperature instrumentation control cables |
| CWC07: Shielded high temperature instrumentation control cables |
| Communication cables |
| CWE01: Fieldbus communication cable (Inside cabinets) |
| CWE02: Fieldbus communication cable (Outside cabinets) |
| CWE03: Optic fibre communication cable |

| | | | | | | | | | | | | | | |
|----------|-------------------|------------------------|----------|-------------|-------------|------------|---|---|------------------|---|--------------------------------|-------------------------|-------------------------|---|
| | | | | | | CONTRACTOR |  | CONTRACTOR dwg number 2558-3312-TMT-E-DWG-SPD | Rev. A | Project Code E2558 | Project Name ALFAGEN | | |  |
| | | | | | | | | | | Document Title Equipment Spider Diagram | | | Scale 1:1 | |
| A | 29/11/2025 | INITIAL VERSION | | RORI | RORI | | | | | RORI | DESIGNED: RORI | DRAWN: RORI | APPROVED: RORI | |
| Rev. | Date | Revisions description | | Designed | Draw | Approved | CLIENT | CLIENT dwg number - | Rev. - | DATE: 29/11/2025 | DATE: 29/11/2025 | DATE: 29/11/2025 | Sheet 19 OF x | |
| 1 | 2 | 3 | 4 | 5 | 6 | 7 | 8 | 9 | 10 | 11 | 12 | | | |













CVS POWER AND CONTROL PANEL


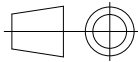
r41.41-3312-TMT-CVT01-PCP01

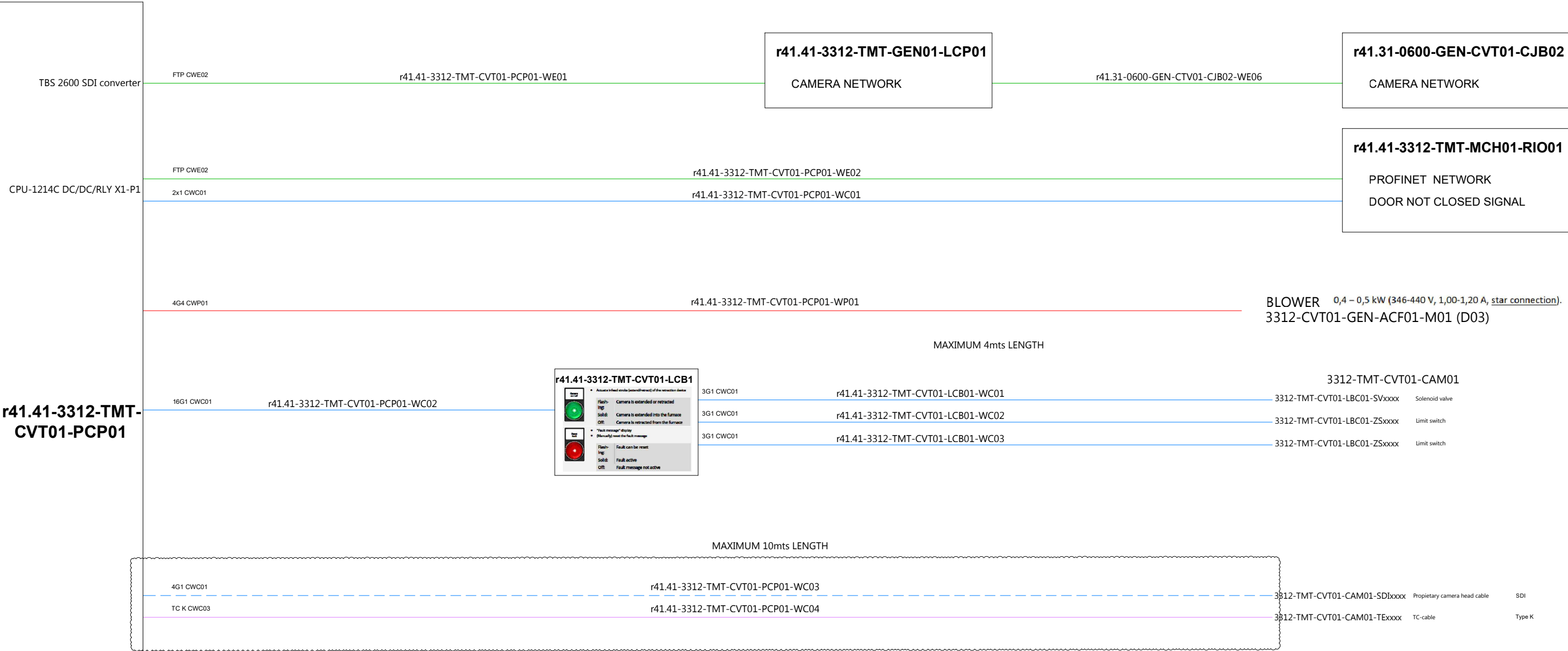
LEGEND

| | | | |
|---|-------------------------|---|---------------------------|
|  | 400Vac Power supply |  | Regular control signals |
|  | 400Vac UPS power supply |  | Analog & shielded signals |
|  | 230Vac Power supply |  | T/C connection |
|  | 230Vac UPS power supply |  | Communication connection |

CATEGORY


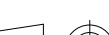
| |
|---|
| Power cables |
| CWP01: Regular power cables |
| CWP02: Shielded power cable |
| CWP03: Flexible power cables |
| CWP04: Regular high temperature power cables |
| CWP05: Shielded high temperature power cables |
| CWP06: General use power cable |
| Instrumentation and control cables |
| CWC01: Regular instrumentation control cables |
| CWC02: Shielded instrumentation control cables |
| CWC03: Thermocouple cable |
| CWC04: Flexible instrumentation control cables |
| CWC05: High voltage cables for ignition transformers |
| CWC06: Regular high temperature instrumentation control cables |
| CWC07: Shielded high temperature instrumentation control cables |
| Communication cables |
| CWE01: Fieldbus communication cable (Inside cabinets) |
| CWE02: Fieldbus communication cable (Outside cabinets) |
| CWE03: Optic fibre communication cable |

| | | | | | | | | | | | | | | |
|----------|-------------------|------------------------|---|-------------|-------------|------------|---|---|------------------|---|--------------------------------|-------------------------|-------------------------|---|
| | | | | | | CONTRACTOR |  | CONTRACTOR dwg number 2558-3312-TMT-E-DWG-SPD | Rev. A | Project Code E2558 | Project Name ALFAGEN | | |  |
| | | | | | | | | | | Document Title Equipment Spider Diagram | | | Scale 1:1 | |
| A | 29/11/2025 | INITIAL VERSION | | RORI | RORI | | | | | DESIGNED: RORI | DRAWN: RORI | APPROVED: RORI | Format A3 | |
| Rev. | Date | Revisions description | | Designed | Draw | Approved | | CLIENT dwg number - | Rev. - | DATE: 29/11/2025 | DATE: 29/11/2025 | DATE: 29/11/2025 | Sheet 22 OF x | |
| 1 | 2 | 3 | 4 | 5 | 6 | 7 | 8 | 9 | 10 | 11 | 12 | | | |



Legend for the diagram:

- Flash:** Camera is extended or retracted.
- Flg:** Camera is extended into the furnace.
- Solid:** Camera is extended into the furnace.
- Off:** Camera is retracted from the furnace.
- Flash:** Switching on side channel compressor.
- Flg:** Side channel compressor switched on.
- Solid:** Side channel compressor switched on.
- Off:** Side channel compressor switched off.
- Flash:** "Fault message" display.
- Flg:** Fault can be reset.
- Solid:** Fault active.
- Off:** Fault message not active.
- Flash:** This function is used to test all operating indicator lights, limit switches, push buttons and other visual and acoustic signals.

| | | | | | | | | | | | | | | | |
|------|------------|-----------------------|--|--|----------|------------|---|-----------------------|-----------|--------------------------|-------------------------|------------------|------------------|---|------------------|
| | | | | | | CONTRACTOR | <div><div>insertec</div><div>Furnaces & Refractories</div></div> <div></div> | CONTRACTOR dwg number | Rev. A | Project Code E2558 | Project Name ALFAGEN | | |  | |
| | | | | | | | | | | Document Title | | | | | |
| | | | | | | | | | | Equipment Spider Diagram | | | Scale 1:1 | | |
| A | 29/11/2025 | INITIAL VERSION | | | RORI | RORI | RORI | CLIENT | | CLIENT dwg number - | Rev. - | DESIGNED: RORI | DRAWN: RORI | APPROVED: RORI | Format A3 |
| Rev. | Date | Revisions description | | | Designed | Draw | Approved | | | | | DATE: 29/11/2025 | DATE: 29/11/2025 | DATE: 29/11/2025 | Sheet 23 OF x |

CVS POWER AND CONTROL PANEL


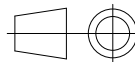
r41.41-3312-TMT-CVT01-PCP02

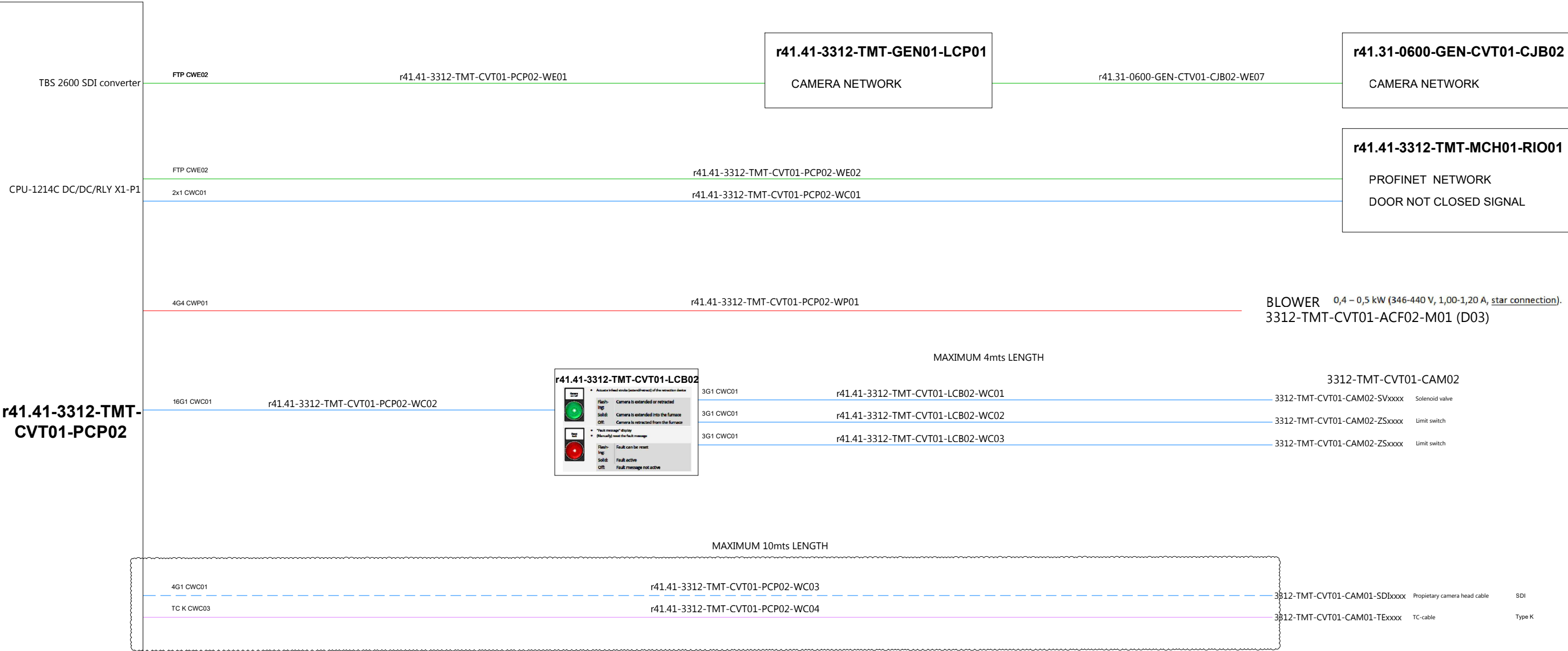
LEGEND



| | | | |
|---|-------------------------|---|---------------------------|
| | 400Vac Power supply | | Regular control signals |
| | 400Vac UPS power supply | | Analog & shielded signals |
| | 230Vac Power supply | | T/C connection |
| | 230Vac UPS power supply | | Communication connection |

CATEGORY

| |
|---|
| Power cables |
| CWP01: Regular power cables |
| CWP02: Shielded power cable |
| CWP03: Flexible power cables |
| CWP04: Regular high temperature power cables |
| CWP05: Shielded high temperature power cables |
| CWP06: General use power cable |
| Instrumentation and control cables |
| CWC01: Regular instrumentation control cables |
| CWC02: Shielded instrumentation control cables |
| CWC03: Thermocouple cable |
| CWC04: Flexible instrumentation control cables |
| CWC05: High voltage cables for ignition transformers |
| CWC06: Regular high temperature instrumentation control cables |
| CWC07: Shielded high temperature instrumentation control cables |
| Communication cables |
| CWE01: Fieldbus communication cable (Inside cabinets) |
| CWE02: Fieldbus communication cable (Outside cabinets) |
| CWE03: Optic fibre communication cable |

| | | | | | | | | | | | | | | | | | |
|----------|-------------------|------------------------|--|-------------|-------------|-------------|---|---|-------------------------------|---|--------------------------------|--|-------------------------|---|-------------------------|-------------------------|--|
| | | | | | | CONTRACTOR |  | CONTRACTOR dwg number 2558-3312-TMT-E-DWG-SPD | Rev. A | Project Code E2558 | Project Name ALFAGEN | | |  | | | |
| | | | | | | | | | | Document Title Equipment Spider Diagram | | | | | | Scale 1:1 | |
| | | | | | | | | | | | | | | | | | |
| A | 29/11/2025 | INITIAL VERSION | | RORI | RORI | RORI | CLIENT | | CLIENT dwg number - | Rev. - | DESIGNED: RORI | | DRAWN: RORI | | APPROVED: RORI | Format A3 | |
| Rev. | Date | Revisions description | | Designed | Draw | Approved | | | | | DATE: 29/11/2025 | | DATE: 29/11/2025 | | DATE: 29/11/2025 | Sheet 24 OF x | |
| | | | | | | | | | | | | | | | | | |



| | | | | | | | | | | | | | | | |
|------|------------|-----------------------|--|--|----------|------------|---|-------------------------|------------------------|--------------------------|-------------------------|------------------|------------------|---|--------------|
| | | | | | | CONTRACTOR |  | CONTRACTOR dwg number | Rev. A | Project Code E2558 | Project Name ALFAGEN | | |  | |
| | | | | | | | | 2558-3312-TMT-E-DWG-SPD | | Document Title | | | | | |
| | | | | | | | | | | Equipment Spider Diagram | | | | | Scale 1:1 |
| A | 29/11/2025 | INITIAL VERSION | | | RORI | RORI | RORI | CLIENT | CLIENT dwg number - | Rev. - | DESIGNED: RORI | DRAWN: RORI | APPROVED: RORI | Format A3 | |
| Rev. | Date | Revisions description | | | Designed | Draw | Approved | | | | DATE: 29/11/2025 | DATE: 29/11/2025 | DATE: 29/11/2025 | Sheet 25 OF x | |